

2ND GEN TECH: DOOR PANEL INSTALL— PROJECT F2



The first item your friends, as well as show judges, will notice as soon as they open your car doors are the door panels and armrests. Warped, torn, and broken parts make a poor first impression. For a minimum amount of time and money, you can replace these items so they look better than new.

Parts Needed:

- 707425 1978-81 Pre-assembled standard door panels (black)
 - 746064 1970-81 Door panel watershield
 - 49-49 String caulk
 - 734046 1967-81 Door panel mounting clip kit
 - 734045 1970-81 Lower door panel plastic button kit
 - 707536 1977-81 Door handle escutcheon
 - 707663 1974-81 Armrest door pull, right
 - 707664 1974-81 Armrest door pull, left
 - 725117 1973-76 Power window switch
 - 725118 1977-81 Power window switch
- Note: 1982-2002 Switches available! Please call your sales rep for part numbers.

Tools Needed:

- Putty knife
- Razor blade
- Zip ties
- Mineral spirits
- Wood chisel

Time Frame:

4 Hours



We begin the new door panel installation by first addressing the door panel watershield, **part #746064**. Many of us have been guilty of removing the watershield in order to repair a window guide or to install speakers, but because we weren't sure of their function we didn't replace them. Besides, what purpose can a piece of coated paper serve anyway? A few months later, when our door panels started to pucker and lift, we just chalked that up to the age of the vehicle. Now, since we have gotten older and (hopefully) wiser, we realize the importance of a watershield. Ahhh-ha! They are used in our homes to keep the walls moisture free and the watershields are installed behind the interior door panels of our Camaro for the same reason!



Photo #1: Project F2 has power windows. There was just enough left of our old door interior panel to determine the placement of the switch and we transferred this to the new watershield. The material was trimmed with a razor blade prior to installation.

Photo #2: Turning our attention to the door, the power door lock wiring harness was routed between the door and watershield, originally. We routed the harness in the same location using zip ties to secure it, as the original clips had long ago failed. The original watershield was held in place with string caulk, which was dry and full of dirt. We removed all traces of it with a putty knife and mineral spirits.



Photo #3: We then installed fresh string caulk, **part #49-49**, to the back (uncoated) side of the barrier and affixed it to the inside of the door. Note the power door lock plug above the inside door handle.

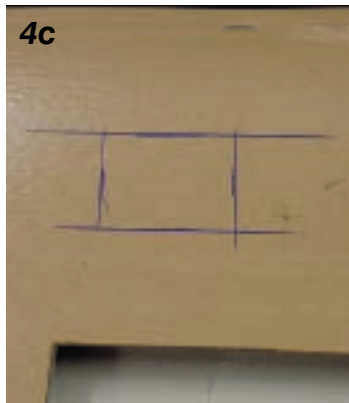
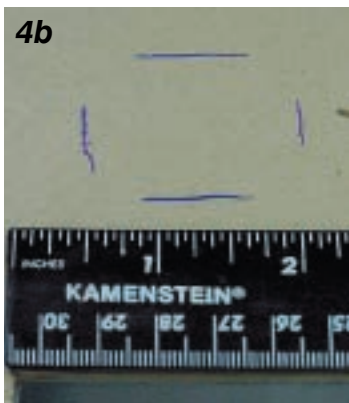
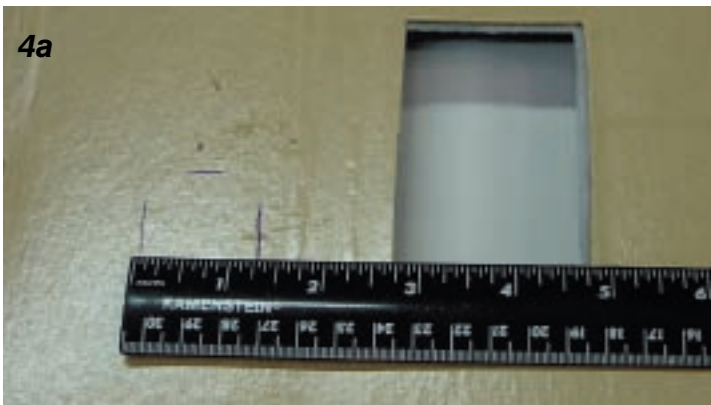


Photo #4a, #4b & #4c: The new pre-assembled standard door panels, **part #707425**, were then turned over to lay out the holes for the power door lock switches. We measured the locations off the inside door handle hole on our old panel and transferred them to the new ones.

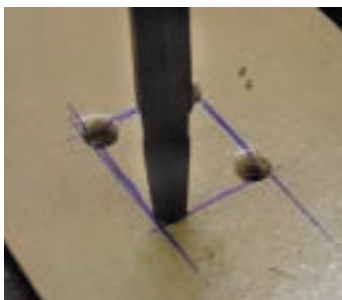


Photo #5: There is an indentation in the door frame for the switch and plug, which we double-checked against our layout. Next, a gasket punch was used for the radius on the corners.

Photo #6: We used a disposable wood backer for the punch and pressed the door panel tightly to the backer before making our punch. We were concerned about slipping when making the final cuts with a knife so we elected to use a SHARP wood chisel and our cuts came out just fine.



Photo #7: The power door lock switches were snapped into place with their supplied retainers. And now the door panel mounting clips, **part #734046**, can be installed into the door panel, as well as the plastic button retainers, **part #734045**. We found the clips install in the oval panel holes and the buttons screw into the round holes, by slipping the 90° corner under the cardboard and turning.



Photo #8a & #8b: The interior panel was then located over the glass adjustment clips, the PDL switch was connected, the clips and buttons were lined up with their respective holes and the new panel was popped into place. Then the inside door handle escutcheon, **part #707536**, was screwed into place.



Photo #9: Next, the reproduction armrest door pulls, **part #707663** and **#707664**, were installed using the original screws. We were thrilled with the way our project turned out and are positive you will be too! Good Luck! 🍀